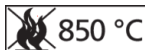
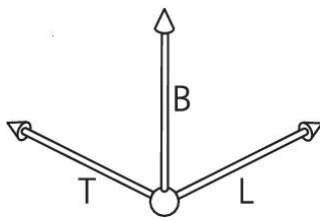
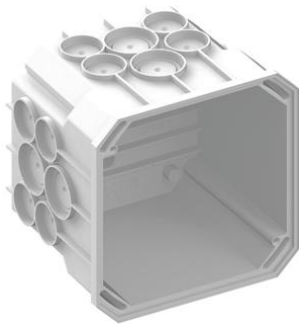


International products

**In-wall back box 115 x 115 x 101 mm, quadratic glow wire tested 850°C**

- Flat bearing surface thanks to 4 support points
- Voltage transfer is prevented by countersunk screw mounts
- Essential in timber construction
- Extension frame for sub-ceiling insulation available

Article no:	9908.01.850
EAN:	7611614231532
Length	115 mm
Width	115 mm
Depth	101 mm
Break-out openings Ø 20 mm	16
Combination conduit entries M20/25	8
Dispatch	30

For international projects, we offer a large range of products which meet the relevant national standards and regulations.

- Dimensions and approvals based on national standards
- Suitable installation tools
- Many combination options

