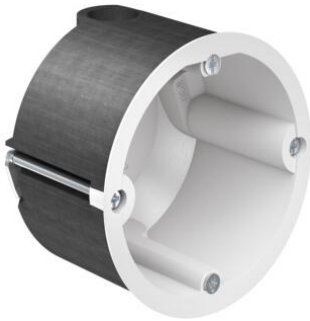


HWD 90 cavity wall boxes



HWD 90 one-gang junction box

- For F30-F120 or EI30-EI120 and F30-B / F60-B fire-protection walls
- Also for I30 - I90 installation shafts / installation ducts
- also for F30-B - F60-B timber frame or timber panel construction walls

Article no:	9464-01
EAN:	4013456531666
For panel thickness	7 - 40 mm
Depth	54,5 mm
Cut hole Ø	74 mm
Screw spacing	60 mm
Cable entries of up to Ø 11.5 mm	4
Support connectors for each package	5
DIBt approval	Z-19.21-1788
ETA approval	ETA-18/0091
Combination distance through single separation of the pre-embossed edge	71 mm
alternatively cable entry for three-phase alternating current of up to 5 x 2.5 mm possible	Yes
for sound insulation walls up to	77 dB
Halogen-free	Yes
Packaging inner/dispatch	10/100

HWD 90 cavity wall boxes for F30-F120 or EI30-EI120 fire-protection walls ensure certified and fire-protection compliant electrical installation. They are now also approved for timber walls in F30-B/F60-B timber frame or timber panel construction. No additional measures, such as encasing, are necessary. The intelligent AFS technology reacts immediately to fire and heat and automatically closes the installation opening. This guarantees the fire resistance class of the fire-protection wall and secures emergency routes. Use in all fire-protection walls and the fire-resistance duration of up to 120 minutes ensures maximum flexibility, even when the planning is changed. At the same time, it also maintains the wall's sound insulation requirements.

- For F30-F120 or EI30-EI120 and F30-B / F60-B fire-protection walls
- Maintains the wall's sound insulation protection
- Retrofitting also possible
- With fire-protection cover, can be used as a junction box
- Also for directly opposing installation

