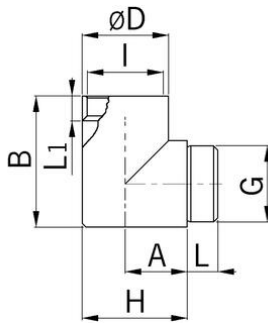


## Elbow 90° nickel-plated brass with internal and external thread



### Entry thread metric

· with O-ring

<b>Article no:</b>	<b>5612</b>
EAN:	7611614145006
Material	Nickel-plated brass
O-ring	NBR
Operation temperature	-40°C / +100°C
Protection class	IP 54
Further protection	IP 68, if the entry thread is sealed
Entry thread	M12x1.5
Internal thread	M12x1.5
Dimension D	15 mm
Thread length L	5.0 mm
Thread length L1	7
Dimension A	13 mm
Dimension B	25 mm
Dimension H	20 mm
Dispatch	50