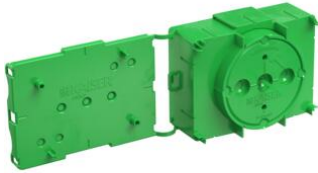


System Flat 45



One-gang junction box Flat 45

- For use in walls from 5 cm
- With lateral terminal compartment
- Attachment of the Flat 45 fixing and support elements by push-button connection
- 1-piece with moulded rear part
- Standardised combination distance 71 mm
- with 4 screw domes

Article no:	1266-01
EAN:	4013456587090
Length	106 mm
Width	73,4 mm
Depth	45 mm
Exit opening Ø	60 mm
Markings for wires and cables up to Ø 25 mm	6
Number of parts	1
Dispatch	100

The new Flat 45 system makes electrical installation in modularised, industrially produced room systems simpler, more flexible and more economical. With its low installation depth of 45 mm, the Flat 45 one-gang, one-gang junction and wall light connection box is specially adapted for the factory production of complete modules with low wall thicknesses. For secure fixing to the formwork using expansion dowels, rivets and threaded screws, they have fixing options at the front and rear. Exact positioning on the reinforcement with support element on the rear abutment between the two formwork sides is made possible by special fixing and support elements with lateral connectors and support elements for wall thicknesses of 8 and 12 cm.

- Complete range consisting of one-gang box, one-gang junction box and wall light connection box
- System installation depth 45 mm
- Robust and concrete-tight article design
- One-gang junction box with generous lateral terminal compartment
- Can be stably combined over the complete box body with a standardised combination distance of 71 mm
- Easy installation of pre-wired installation accessories in multiple combinations using a bridge that can be broken off afterwards

