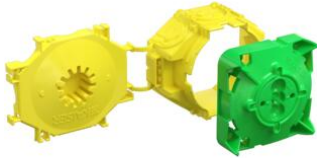


B¹ one-gang box and B¹ one-gang junction boxes



B¹ wall light connection box

- space for 3 terminal blocks and associated cables
- 2-piece with moulded rear part
- Two slots for B¹ Prefix® system wings
- Rear part of box with slot for support element
- Suitable for all types of formwork

Article no:	1248-01
EAN:	4013456551312
Length	94 mm
Width	75 mm
Depth	59 mm
Installation opening Ø	35 mm
Break-out openings for DIN EN Ø 20/25 mm conduits	6
Markings for cables up to Ø 16 mm	6
Number of parts	2
Packaging inner/dispatch	20/200

B¹, the new on-site mixed concrete range of products for electrical installation work. In addition to the tried-and-tested system features such as the flat front part, sturdy fixing domes and the support element slot with a sprung box base, the new B¹ range has innovative conduit entries, sturdy slots for the new B¹ Prefix® system wing range, and also bridges – which can be broken out later if required – for connecting accessories in combinations.

- Suitable for all types of formwork
- Slot for B¹ Prefix® system wing set
- Can be stably combined over the complete box body with a standardised combination distance of 71 mm
- Innovative conduit entries for fast processing on the construction site
- Signal bristles for easy location with installations on the opposing formwork side
- Larger mounting and installation space
- Installation of pre-wired installation accessories with multiple combinations, because the bridge can be broken out later

