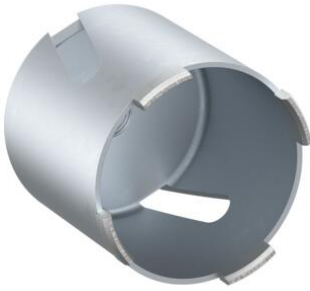


## Diamond grinding head



### Diamond grinding head without dust extraction

- Universal area of application
- For medium-hard masonry
- High service life
- Entry thread M18 x 1.5
- with side slits
- for screwing onto the direct attachment

<b>Article no:</b>	<b>1088-00</b>
EAN:	4013456440005
Drill Ø	82 mm
Cutting depth	max. 80 mm

Diamond grinding head for precise and quick installation openings for one-gang boxes and one-gang junction boxes in practically all types of walls. Clean and low-dust handling due to dust extraction.

- Quick creation of installation openings in all types of walls
- For electric drills with direct attachment or 13 mm chuck
- With optional dust extraction