

The new generation of HaloX®

Previous product range

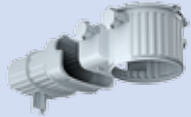


HaloX® 100
1281-00
Installation diameter ≤ Ø 100 mm

Installation diameter
max. Ø **100** mm



HaloX®-O*
1290-40
Installation diameter ≤ Ø 100 mm



**HaloX® 100
with tunnel 190**
1281-30
Installation diameter ≤ Ø 100 mm

Installation diameter
max. Ø **100** mm
+ operating devices



**HaloX®-O*
with transformer tunnel**
1290-41
Installation diameter ≤ Ø 100 mm



**HaloX®-O*
with short tunnel**
1290-42
Installation diameter ≤ Ø 100 mm



HaloX® 180
1282-00
Installation diameter max. Ø 180 mm

Installation diameter
max. Ø **180** mm



KompaX® 3*
1294-..
Installation diameter max. Ø 215 mm



**HaloX® 180
with tunnel 190**
1282-30
Installation diameter max. Ø 180 mm



**HaloX® 180
with tunnel 325**
1282-40
Installation diameter max. Ø 180 mm

Installation diameter
max. Ø **180** mm
+ operating devices



KompaX® 2
1292-..
Installation diameter max. Ø 200 mm



HaloX® 250
1283-00
Installation diameter max. Ø 250 mm

Installation diameter
max. Ø **250** mm



KompaX® 3*
1294-..
Installation diameter max. Ø 215 mm



**HaloX® 250
with tunnel 325**
1283-40
Installation diameter max. Ø 250 mm

Installation diameter
max. Ø **250** mm
+ Operating devices



KompaX® 2
1292-..
Installation diameter max. Ø 200 mm

KompaX® 1
1293-..
Installation diameter max. Ø 300 mm

* Discontinued items

KAISER GmbH & Co. KG

Ramsloh 4 · 58579 Schalksmühle
DEUTSCHLAND
Tel. +49 (0) 23 55/809-0 · Fax +49 (0) 23 55/809-21
www.kaiser-elektro.de · info@kaiser-elektro.de



System overview of HaloX®
www.kaiser-elektro.org/haloxsystemoverviews



The new generation of HaloX®

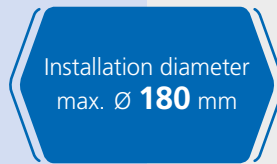
Previous product range



HaloX® 180
1282-71 / 1282-74

Installation diameter max. **Ø 140 mm**
(with tolerance compensation)

Installation diameter max. **Ø 180 mm**
(without tolerance compensation)



HaloX®-P*
1291-22

Installation diameter max. **Ø 100 mm**
(with tolerance compensation)

Installation diameter max. **Ø 140 mm**
(without tolerance compensation)



Kompax® 3*
1294-..

Installation diameter max. **Ø 160 mm**
(with tolerance compensation)

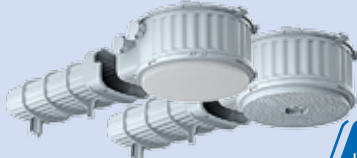
Installation diameter max. **Ø 200 mm**
(without tolerance compensation)



HaloX® 180 with tunnel 190
1282-72 / 1282-75

Installation diameter max. **Ø 140 mm**
(with tolerance compensation)

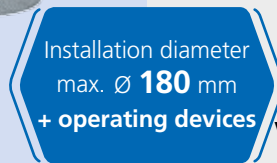
Installation diameter max. **Ø 180 mm**
(without tolerance compensation)



HaloX® 180 with tunnel 325
1282-73 / 1282-76

Installation diameter max. **Ø 140 mm**
(with tolerance compensation)

Installation diameter max. **Ø 180 mm**
(without tolerance compensation)



HaloX®-P* with transformer tunnel
1291-23

Installation diameter max. **Ø 100 mm**
(with tolerance compensation)

Installation diameter max. **Ø 140 mm**
(without tolerance compensation)



Kompax® 2
1292-..

Installation diameter max. **Ø 140 mm**
(with tolerance compensation)

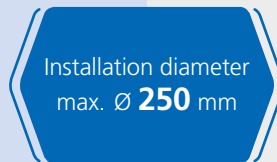
Installation diameter max. **Ø 180 mm**
(without tolerance compensation)



HaloX® 250
1283-71 / 1283-74

Installation diameter max. **Ø 210 mm**
(with tolerance compensation)

Installation diameter max. **Ø 250 mm**
(without tolerance compensation)



Kompax® 3*
1294-..

Installation diameter max. **Ø 160 mm**
(with tolerance compensation)

Installation diameter max. **Ø 200 mm**
(without tolerance compensation)



HaloX® 250 with tunnel 325
1283-73 / 1283-76

Installation diameter max. **Ø 210 mm**
(with tolerance compensation)

Installation diameter max. **Ø 250 mm**
(without tolerance compensation)



Kompax® 2
1292-..

Installation diameter max. **Ø 140 mm**
(with tolerance compensation)

Installation diameter max. **Ø 180 mm**
(without tolerance compensation)



Kompax® 1
1293-..

Installation diameter max. **Ø 260 mm**
(with tolerance compensation)

Installation diameter max. **Ø 300 mm**
(without tolerance compensation)

* Discontinued items

